

Section-Elevation

Elevation

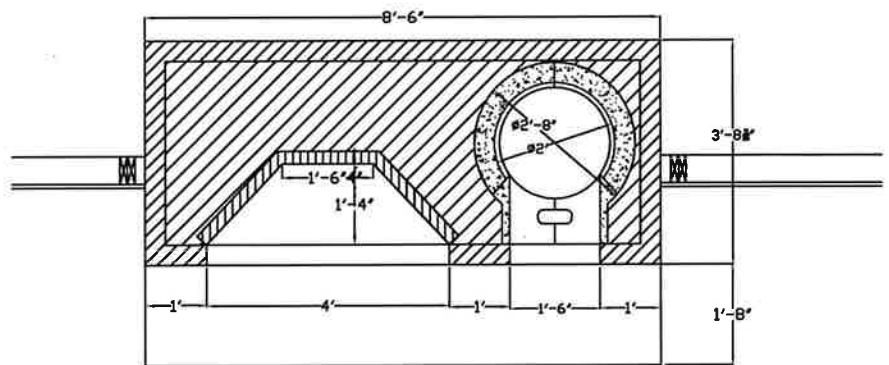
Bill of Materials

- 1-48" Rumford Throat
- 1-large flat damper (30")
- 1-16x20 offset smoke chamber
- 1-24" SCC bake oven set up

as needed- 16x20 flues
 as needed- 4.5x8.5 flues

#GM- 11.30.16

Note: supply adequate make up air



Section-Plan